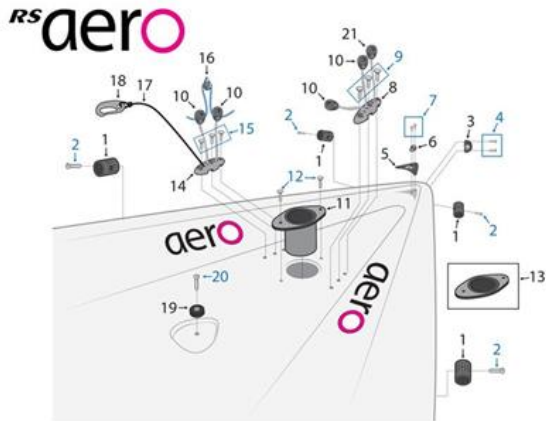
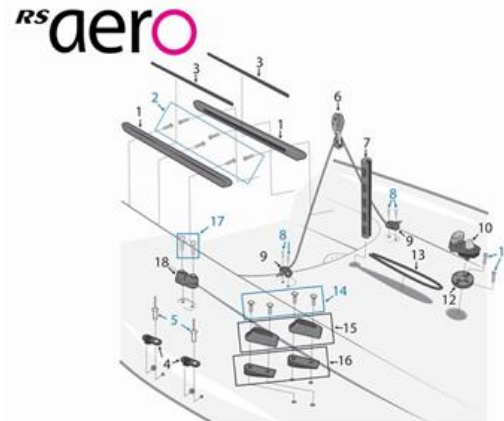


## Bow & Mast Step Area



1. RS Aero Gunwale Fairlead - **AER-HF-901**
2. RS Flat Head Machine Screw: 10 x 1mm - **FIX-S10-C01**
- 3 & 6. [RS Bullseye \(S/S Lined\), Small](#) - **AER-HF-100**
- 4 & 7. RS Hardware Pan Head Machine Screw: 10 x 1 ½ mm - **FIX-S10-P15**
5. RS Aero Carbon Bow Plate Logo - **AER-HF-405**
- 8 & 14. RS Aero Deck Organizer - **AER-HF-404**
- 9 & 15. RS Flat Head Machine Screw: 10 x 1 ½ mm - **FIX-S10-C15**
10. [Harken T18 Soft Attach Block](#) - **H2698**
11. [RS Aero Mast Step Collar](#) - **AER-HF-201**
12. RS Flat Head Machine Screw: 10 x ¾ mm - **FIX-S10-C34**
13. [RS Aero Mast Step Collar, Retrofit](#) - **AER-HF-203**
16. Harken 16 mm Single Block - **H404**
17. RS Aero Daggerboard Elastic - **AER-WEB-017**
18. [Allen Nylon Shockcord Hook](#) - **A359**
19. RS Aero Deck Button - **RSM-HF-902**
20. RS Pan Head Machine Screw: 10 x 1mm - **FIX-S10-P01**
21. [Harken T2 18 mm Double Block](#) - **H2158**

## Daggerboard Case Area



1. RS Aero Grabrail - **RSM-HF-402**
2. RS Pan Head Machine Screw: 10 x 1 ½ mm - **FIX-S10-P15**
3. RS Aero Grabrail Insert - **RSM-HF-407**
4. RS Aero Gunwale Bushing, Angled - **AER-HF-900**
5. Black Nylon Cinch Rivet - **RSM-MS-302**
6. Harken 40mm Carbo Traveler Block - **H2649**
7. RS Aero Daggerboard Case Insert - **AER-HF-202**
8. RS Pan Head Machine Screw: 10 x 1 ½ mm - **FIX-S10-P15**
9. RS Aero Traveler Eyestay - **480-351**
10. [RS Aero Vang Swivel](#) - **AER-HF-402**
11. RS Pan Head Machine Screw: 10 x 1 ½ mm - **FIX-S10-P15**
12. RS Aero Vang Mounting Base - **AER-HF-403**
13. RS Aero Gasket Fluff (1m) - **RSM-HF-900**
14. RS Flat Head Machine Screw #8 x 1 ½ mm - **FIX-S8-C02**
15. [Clam Cleat - Aluminum Racing \\*Junior\\*](#) - **CL211 MK2**
16. Clamcleat Tapered Pad for CL211 MK2 - **CL819**
17. RS Pan Head Machine Screw: 8 x 3/4mm - **FIX-S8-P02**
18. [Harken Micro Cam Cleat](#) - **H471**

Click the colored text to be linked directly to the product page!

## Transom Area

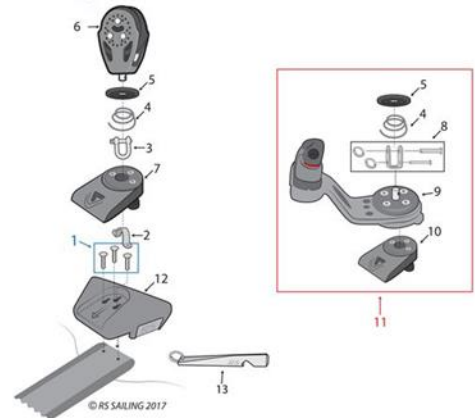
**RS** **aero**



1. Drain Plug with Housing RWO - **R2066**
2. RS Pan Head Machine Screw: 8 x 3/4mm - **FIX-S8-P02**
3. Drain Plug - RWO PLUG ONLY - **R2067**
4. Allen Plastic Ring 18mm Diameter - **A.156**
5. [RS Aero Gudgeon, Non-Locking - RSM-HF-506](#)
6. [RS Gudgeon with Lock - C16-HF-502](#)
7. RS Pan Head Machine Screw 14 x 2mm - **FIX-S14-P01**
8. RS Aero Water Bottle - **AER-MS-900**
9. RS Hiking Strap Attachment Cross - **TER-HF-401**
10. RS Flat Head Machine Screw: 10 x 1mm - **FIX-S10-C01**
11. RS Hiking Strap Plate - **RSM-HF-301**
12. RS Pan Head Machine Screw: 10 x 1 1/2mm - **FIX-S10-P15**
13. RS Aero Scupper, Port - **AER-HF-501**
14. RS Aero Scupper, Starboard - **AER-HF-500**
15. Hiking strap Bungee - **KS305BLK**
16. [RS Aero Hiking Strap - AER-HF-400](#)
17. RS Aero Logo/ Decal Kit - **AER-MS-800**
18. Black Shockcord, 4mm - **KS304BLK**

## Mainsheet Components

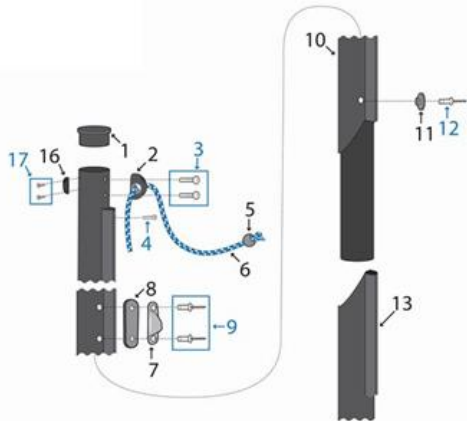
**RS** **aero**



1. RS Flat Head Machine Screw: 10 x 1 1/2 - **FIX-S10-C15**
2. RS Forestay Eyestay - **508-089-01**
3. [Shackle, 3/16" with Pin & Ring - H072](#)
4. [Handle Spring - H071](#)
5. Harken SPRING CUP- CAM BASE (HSB2) - **MP1877B**
6. [Harken 57 mm Ratchet Block - H2135](#)
7. RS Aero Mainsheet Block Shoe - **480-482**
8. Micro Cam Cleat Spring - **H093**
9. Harken Swivel Cam Base w/ 150 Cam Cleat - **H205**
10. RS Aero Main Shoe (For Swivel Cleat Version ONLY) - **480-484**
11. RS Aero Mainsheet Swivel Base - **AER-UA-110**
12. [RS Aero Mainsheet Base, Retro Fit - AER-UA-109](#)
13. RS Aero Bottle Opener Key - **RSM-UA-201**

Click the colored text to be linked directly to the product page!

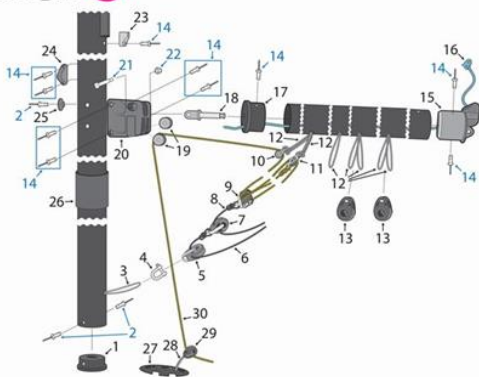
## Upper Mast



1. RS Aero Upper Mast Plug - **AER-SP-902**
2. [RS Bullseye \(S/S Lined\) \\*Med\\* - 508-604](#)
3. RS Carbon Rivet 4.8 x 18mm - **FIX-R48-C18**
4. RS Rivet - Carbon 4.8 x 12.3mm - **FIX-R48-C85**
5. RWO Black Stopper Ball, 6mm - **R1991T**
6. RS Aero Main Halyard Complete - **AER-WEB-400**
7. Clamcleat Racing Fine Line Cleat Port - **CL259**
8. RS Aero Top Mast Cleat Backer - **AER-SP-912**
9. RS Carbon Rivet 4.8 x 12mm - **FIX-R48-C12**
10. [RS Aero Top Section Complete - AER-SP-004](#)
11. RS Aero Mast Button - **AER-SP-903**
12. RS Carbon Rivet 4.8 x 12mm - **FIX-R48-C12**
13. RS Aero Mast Track (sold by meter) - **AER-SP-906**
16. RS Aero Wind Indicator Clip - **AER-UA-108**
17. RS Pan Head Machine Screw: 8 x 3/4mm - **FIX-S8-P02**

## Lower Mast & Boom

**RS** **aero**

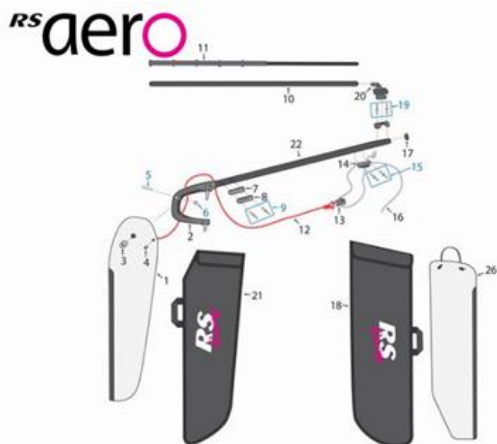


1. RS Aero Mast Heel Plug - **AER-SP-905**
2. RS Carbon Rivet 4.8 x 12mm - **FIX-R48-C12**

3. Lower Mast Loop – 5mm Dyneema
4. Harken 5mm Shallow Bow Shackle - **H2132**
5. [Harken 40 mm Carbo Block - H2650](#)
6. RS Aero Kicker Cascade - **AER-WEB-008**
7. [Harken 29 mm Single Fixed Block - H348](#)
8. RS Aero Kicker Cascade - **AER-WEB-008**
9. Harken 16 mm Double Block - **H406**
10. Harken 16 mm Single Block - **H404**
11. Harken 16 mm Single Block w/Becket - **H405**
12. Boom Block Loops - 4mm Dyneema
13. [Harken T2 40 mm Soft Attach Block - H2148](#)
14. RS Carbon Rivet 4.8 x 18mm - **FIX-R48-C18**
15. RS Aero Boom End Plug - **AER-SP-909**
16. RS Aero Outhaul (Boom Part) - **AER-WEB-005**
17. RS Aero Gooseneck Plug - **AER-SP-908**
18. [RS Aero Gooseneck Pin - AER-SP-904](#)
19. RS Aero Gooseneck Sheave - **AER-SP-907**
20. RS Aero Gooseneck Assembly - **AER-SP-910**
21. RS Pan Head Machine Screw M6 x 35mm - **FIX-B6-P35**
22. RS Nut: M6 Nyloc - **FIX-N6-006**
23. RS Aero Mast Sail Feeder - **AER-SP-911**
24. Clamcleat Mini - **CL204**
25. RS Aero Mast Button - **AER-SP-903**
26. RS Aero Mast Collar - **AER-SP-901**
27. RS Aero Deck Organizer - **AER-HF-404**
28. Gottifredi Maffioli Compact 12, 4mm - **KDB04B**
29. RS Aero Outhaul (Boom Part) - **AER-WEB-005**
30. RS Aero Kicker Control Line - **AER-WEB-009**
- Aero 5 Lower Section - **AER-SP-003**
- [Aero 6 Lower Section - AER-SP-006](#)
- Aero 7 Lower Section - **AER-SP-002**
- Aero 9 Lower Section - **AER-SP-001**

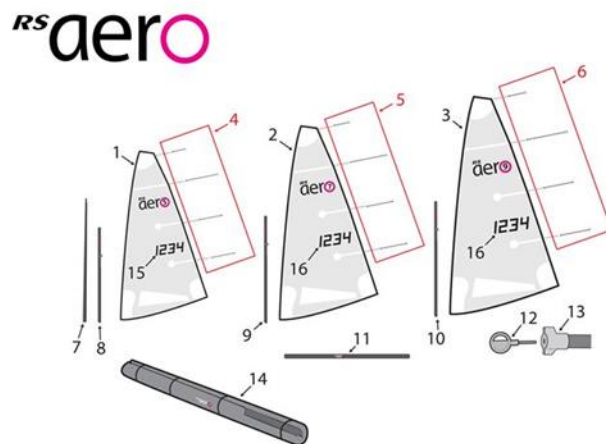
**Click the colored text to be linked directly to the product page!**

## Rudder Stock & Foils



1. [RS Aero Rudderblade - AER-FO-100](#)
2. [RS Aero Rudderstock with carbon tiller - AER-FO-001](#)
3. RS Aero Rudder Pivot Bushing - [AER-FO-901](#)
4. RS Aero Rudder Downhaul Bushing - [AER-FO-902](#)
5. RS Pan Head Machine Screw, M6 x 40mm - [FIX-B6-40](#)
6. RS Nut: M6 Nyloc - [FIX-N6-006](#)
8. Fine Line Racing Cleat Port - [CL259](#)
9. RS Carbon Rivet 4.8 x 12mm - [FIX-R48-C12](#)
10. [RS Aero Tiller Extension \\*CPX\\* - AER-UA-106](#)
11. RS Aero Tiller Extension - [AER-FO-401](#)
12. RS Aero Rudder Downhaul (23ft) - [AER-WEB-013](#)
13. RS Selden 20mm Single Block - [P402101SIN](#)
14. Micro Racing Cleat with Becket - [CL270](#)
15. RS Flat Head Machine Screw 6 x 3/4mm - [FIX-S6-C01](#)
16. Maffioli Evolution Race 4mm, Black / White - [KKD04BWH](#)
17. RS Aero Tiller End Cap - [AER-FO-900](#)
18. [RS Padded Daggerboard Bag - RSM-CO-600](#)
19. RS Carbon Rivet 4.8 x 12mm - [FIX-R48-C12](#)
20. [RS Selden Universal Joint - CA0015](#)
21. [RS Aero Padded Rudder Bag - AER-CO-500](#)
22. RS Aero Tiller Tube Only - [AER-FO-109](#)
26. [RS Aero Daggerboard - AER-FO-200](#)

## Sails and Spars



1. RS Aero: 5 Sail Complete - [AER-SA-102](#)
2. RS Aero: 7 Sail Complete - [AER-SA-101](#)
3. RS Aero: 9 Sail Complete - [AER-SA-100](#)
4. RS Aero 5 Batten Set - [AER-SA-902](#)
5. RS Aero 7 Batten Set - [AER-SA-901](#)
6. RS Aero 9 Batten Set - [AER-SA-900](#)
7. [RS Aero Top Section Complete - AER-SP-004](#)
8. RS Aero 5 Lower Section - [AER-SP-003](#)
9. RS Aero 7 Lower Section - [AER-SP-002](#)
10. RS Aero 9 Lower Section - [AER-SP-001](#)
11. [RS Aero Boom Complete - AER-SP-005](#)
12. RS Batten Adjuster Key - [RSM-SA-908](#)
13. RS Aero Batten Tips with Key - [AER-SA-903](#)
14. [RS Aero Spar Bag - AER-CO-400](#)
15. RS Sail Number, Digital 8, 230mm - [RSM-SA-901](#)
16. [RS Sail Number, Digital 8, 300mm - RSM-SA-900](#)

### Not pictured:

- RS Aero 6 Sail Complete - [AER-SA-103](#)  
 RS Aero 6 Batten Set - [AER-SA-905](#)  
[RS Aero 6 Lower Section - AER-SP-006](#)

Click the colored text to be linked directly to the product page!